

A photograph of a waterfall cascading over mossy rocks in a forest. The water is white and frothy as it falls, surrounded by lush green moss and foliage. The scene is captured from a slightly elevated angle, showing the flow of the water down the rocks.

# **A story about water**

**Robert Gourlay, Chief Scientist  
Resonate Research Pty Ltd**

**Mongarlowe, NSW, Australia**

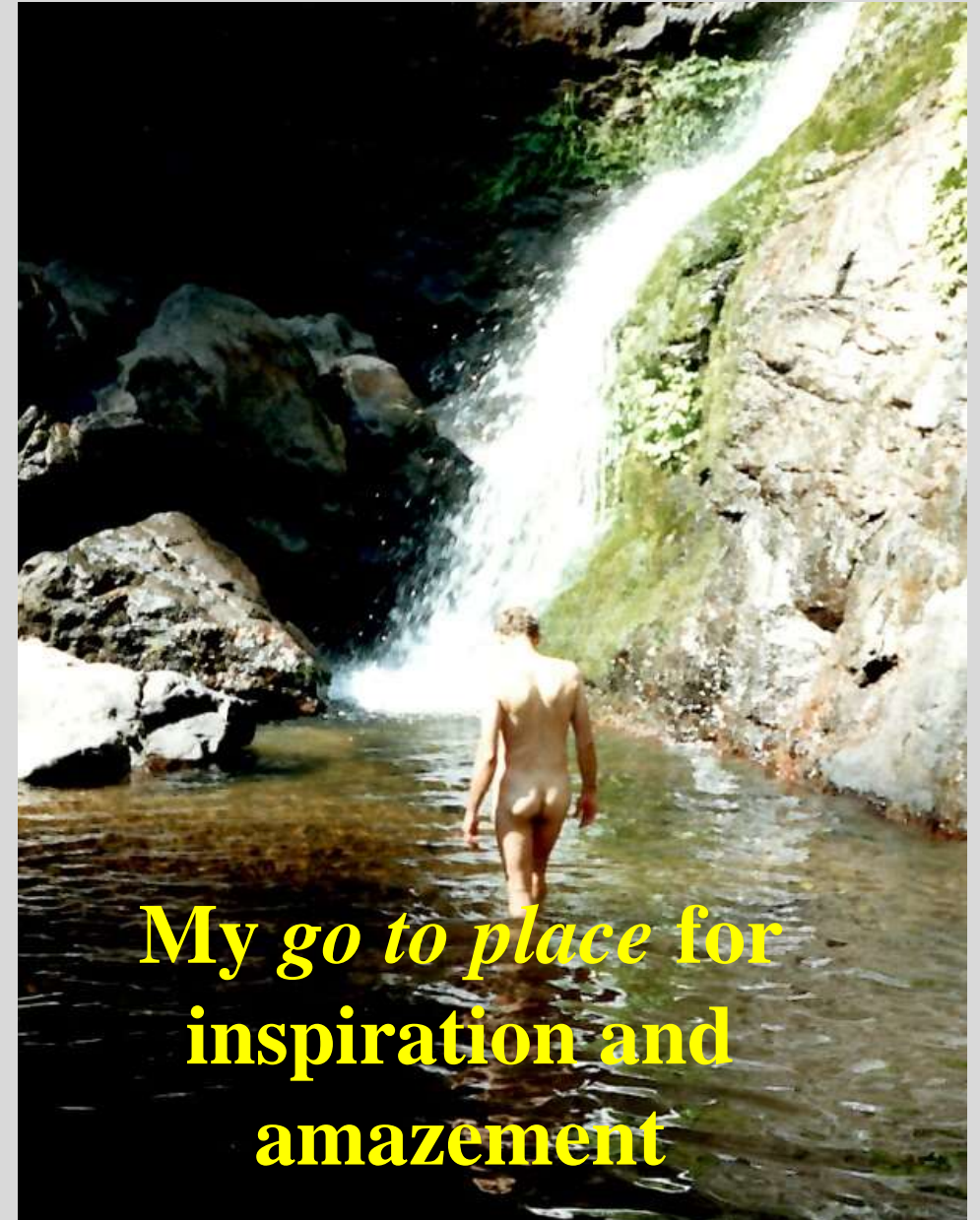
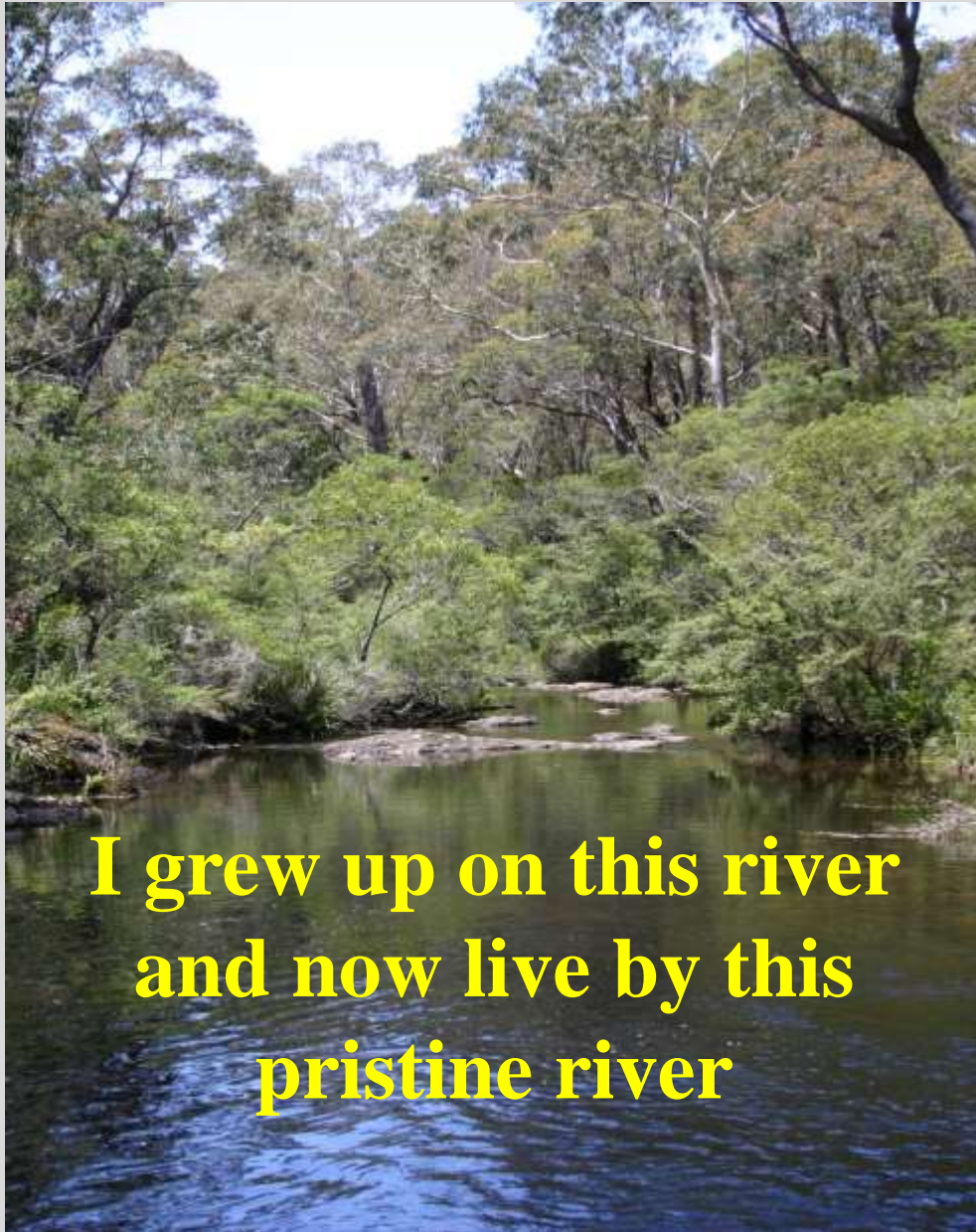




- I am Robert Gourlay, a research scientist with 33 years professional experience in environmental, biological and water energy science
- Today's presentation highlights my MEA water restructuring devices to produce a negative (-) charge in bulk water that is natural and important for soil, plant, water, animal and human health
- This presentation will also cover the science of structured bulk water, how to measure negative charge in bulk water, and the application of MEA devices to produce a permanent negative charge in water for cell health and food security.



# My connection with structured bulk water



# Challenges given to me

I have been interested in the science of water energy and structure since the mid 1990's and read a wide range of books on water energy and structure before my experiments.

- 2008: I met Konstantin Korotkov in the UK where he explained how *it takes 60 hours for life-force energy (soul) to leave a human body after death*. I asked him what happens to vegetables, fruit and water. *He said, you should find out for yourself*
- 2010: I met with a group of water scientists in Vienna (Austria), and they said to me: *the Holy Grail of water was to put a permanent negative (-mV) charge into still water, and do not try to tell (or force) water how to vortex*
- I had **mastered these challenges** by late 2012.



# Introduction



# Presentation products and terms

## MEA water devices (Australian Industry Certified)



*Household*



*Bottle top*



*Commercial building*

**Entropy** (decay and disease-causing) energies  
and **Syntropy** (life-affirming) energies

# What is bulk structured water in nature

- **H<sub>2</sub>O bulk, water in nature, that is unhindered or not changed by man (pristine or wild) is structured. It has a hexagonal crystalline form and a negative charge (-mV).**
- **This water occurs naturally in the ocean, pristine flowing streams and some *sacred*, spring water (eg. magnesium bicarbonate groundwater)**
- **Also, water that has been **restructured** (using a MEA water device) back to a structured, hexagonal form with a permanent negative charge, and then stored in bottles, tanks, ponds, pools, dams, etc.**

# The light bulb moments regarding bulk water

- An important explanation of bulk water energy came from Schauburger's 1930's research where he concluded that many rivers (mainly Germany) that had been regulated for shipping, *the water cut so deep that the river floors now lie as much as ten metres below the level of the banks. This shows that **the river water has lost its magnetic axis and its powers of magnetic levitation, its polarity having been changed to positive (+mV) due to excessive insulation (resistance to electrical flow)***. Therefore, **structured water with a permanent negative (-mV) charge has permanent levitation (anti-gravity) property.**
- Many cultures considered flowing water a fundamental element and expression of ancestral body purification rites. **Flowing water and certain springs were considered self-cleaning and gave rise to the terms *sacred and holy waters*.**
- Water is undoubtedly essential for survival. We hydrate ourselves with it, cleanse our bodies, and use it for various everyday tasks. **It is a vital resource that plays a crucial role in maintaining our health and wellbeing. However, the healing properties of water extend far beyond a mere sustenance and solute.**

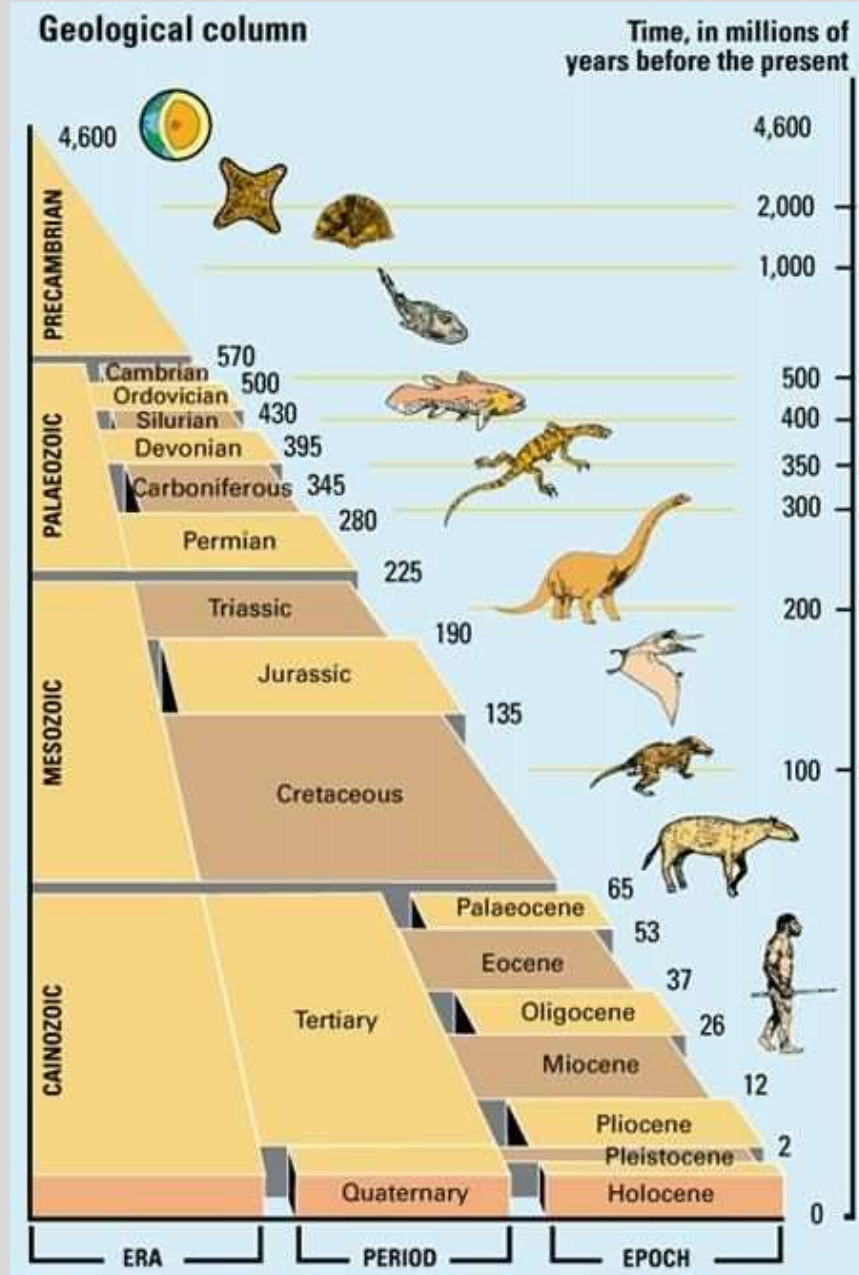


# Bulk, structured water





# Bulk water on the earth and role in life



**3,500-4,000M (years ago: ya):** Water first formed through radioactive transmutation of minerals, in the Moho zone, or boundary between the Earth's crust and its mantle. The Moho lies at a depth of about 22 mi (35 km) below continents. Modern instruments have determined that the velocity of seismic waves increases rapidly at this boundary.

**2,000M ya:** By this time *Earth generated water* had risen to the surface under pressure and formed the early ocean, then **life emerges in the seawater**.

**400M ya:** life emerges on the land.

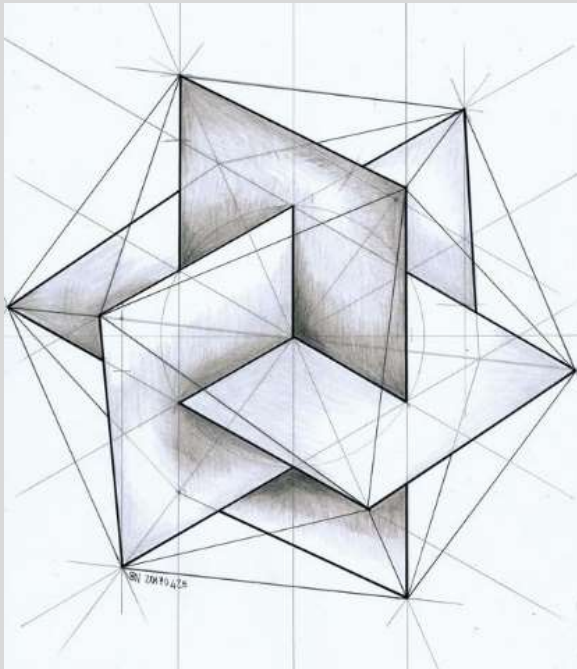
**2M ya:** human species emerge.



# Water is the energy of life

- The amount of water on Earth is increasing, and this is why sea levels will continue to rise, and why we have cities submerged in the ocean. Albeit the amount of fresh water held within the Earth's crust is about 3 times the volume of the ocean. There is no shortage of fresh, bulk water.
- It is the combination of the **water's vortex action and contact of water flow on the Earth and light magnetism that creates the negative charge in the water** and sustains its structure (hexagonal form). It is these forces that create water coherence (structure and negative charge).
- **Water in a pristine stream contains minerals, microbes and photons of light from its environment.** Every drop of this water is unique as it entrains scalar energy (information) along its flow path. This process is the **consciousness of water** to receive, store and transmit information.

# Bulk, structured is crystal water



Structured water is always in a 6-sided, crystalline structure either as **cell water (gel: EZ)** or **liquid bulk (EZ) water state**

All snowflakes and ice have this crystalline structure

The **crystal structure can have complex horizontal and vertical dimensions** in space and time depending on the water source. *The ordering dimension of water can amount to a few million molecular layers in a water crystal.*

**Bulk, structured water is coherent and coloured blue/green.** This is the effect of hydrogen emission (yellow) combining with oxygen emission (green), reflecting through a hexagonal, crystalline structure to reflect a blue/green colour in structured water.



# Natural structured, blue/green water



There are examples in natural water systems (eg. turbulent rivers, waterfalls, lakes, etc.) where the structured water will appear blue/green. This is an example of a waterfall on the Waikato River, near Lake Taupo in NZ (central northern island of NZ)

This water is structured with a negative charge because it is flowing with turbulence and has a high mineral, hydrogen, oxygen and sunlight (IR) content to enhance the blue/green light emission.

# Naturally structured (activated and energised) water in New Zealand



**Bulk water in a pristine flowing stream will have a negative (-mV) charge of between -50mV to -100mV. This is the water that your ancestors drank.**



# Bulk water messages

- **Flowing water can clean itself.** Electrical, physical, chemical and biological processes are all parts of the self-purification ability of structured water. Flowing water excludes or neutralises chemicals back to an elemental form, through entrainment of scalar energies that enable selection, transformation and the exclusion of materials (including sedimentation, dilution and aeration) through natural processes (eg. water turbulence and vortexes).
- These **changes in water properties or states are explained by the 1<sup>st</sup> Law of Thermodynamics** (physics) that says you cannot destroy matter or energy, only change or transform them to another form or state.
- **Water has the highest level of consciousness** (*the unified field of awareness*). While water cannot be destroyed, it can **defy the 2<sup>nd</sup> Law of Thermodynamics** as it can be transformed from entropy water (decayed by humans) into syntropy (life-affirming), structured water.

# The vortex consciousness



**Water knows how to vortex. It is through the geometry of the vortex (*phi* or golden mean ratio of 1:1.618) that creates a negative charge in flowing water when it is in contact with Earth and light magnetism.**



# Magnetic levitation or anti-gravity energy in water

Schauberger observed that moss at the bottom of a river was bending upstream, despite the fast flow of the water, and this was like the phenomenon of the stationary trout in flowing water.

His explanation for these phenomena was the *longitudinal vortex*: by turning around its own axis in a helical motion the trout had created a counter-current which enabled it either to remain stationary or, by flapping its gills and creating further vortices, to move rapidly upstream with remarkable speed.

Schauberger formulated this by stating that, in addition to the gravitational force which draws the water away from the source and down to the sea, there is a corresponding **levitational energy** which leads the water back to its source.

When the river is in a state of optimum health, the levitational forces are even stronger than the gravitational pull, resulting in the tips of moss on the stream bed being pulled *backwards*.



**All water pathways are magnets. There are no pumps to produce pressure. Magnetic levitation occurs in:**

- 1. Pristine or wild rivers**
- 2. Water movement up through the xylem of trees over 10's m**
- 3. Water rising through the Earth's crust over 35 km**
- 4. Continuous blood flow through 100,000 km of human cardiovascular system.**

# H<sub>2</sub>O structured v. destructured water

- When bulk water is held in storage for more than 60 hours (eg. tanks, dams, reservoirs, etc.) or moved through straight pipes **it will lose negative (-mV) charge and become positive (+mV) charged, entropy water**. Most urban water is about +55 mV and is called de-structured (dead) water.
- When you consume de-structured water with a positive charge (+mV), your body must expend your energy to convert it to a negative charge (-mV). **Prof. Korotkov says *most people are expending 50% of their energy everyday converting positive charge water and food (cell water) into a negative charge.***
- **Structured water with a permanent negative charge is living water with free energy for cells.**



# We are one with the energy of water



*When we drink from a pristine, flowing stream we entrain the memory of the water, and we pass our memory to the water. **Water energy is the master of its capability**, not water chemistry. Therefore, if you master water's energy, you master cell function.*

*The flow of electrons in living water and light is basic to all life. Everything is connected.*

# Water consciousness for cell life potential



# The path of water, cells and humans

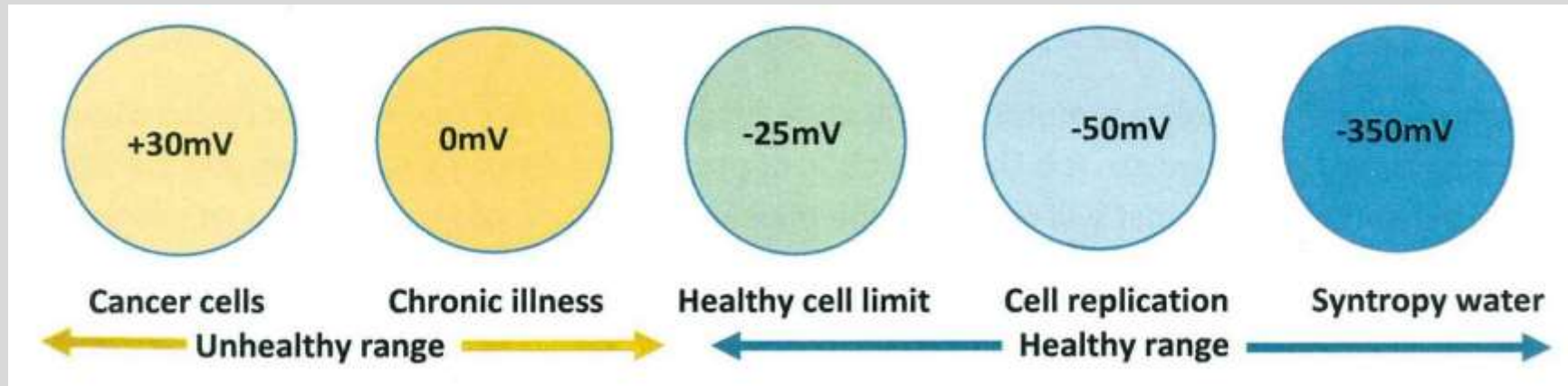
- Cell mitochondria arose through a *spooky endosymbiosis event* **more than 1.45 billion years ago**, by permanent enslavement of purple non-sulphur bacteria, ie. life form and function as a transmutation process in the presence of water.
- Hominins first appear by around 6 million years ago, in the **Miocene epoch**, which ended about 5.3 million years ago. Our species evolutionary path takes us through the Pliocene, the Pleistocene, and finally into the Holocene. Modern Homo sapiens appear from **about 160,000 years ago**.
- Water on Earth has consciously witnessed the emergence of life over 1.45 billion years with microbes, while human life is *miniscule* in the timeline of Earth's life. Therefore, the *hierarchy of consciousness would be water, microbes, plants animals and humans*.
- This is the starting point of how humans should consider *structured water as the essence of life, that shapes and nurtures our environment, and is the conveyer of information*.

# Life force energies in cells

- All life is governed by two forms of life force energy: entropy and syntropy. **Entropy** is the positive charge force that decays (**aging**) and **syntropy** is the negative charge or electron force that sustains cellular regulation and healing (**anti-aging**)
- **The quality of our health depends on which force we feed** through food, water, sunlight (20 minutes per day), and lifestyle
- The quality of these inputs to our body cells determines our rate of aging or cell decay
- The vital force in blood is highly dependent on the continuous consumption of structured water
- **Structured water with a permanent negative charge is the ultimate syntropy force for wellbeing and longevity, ie. energy healing.**



# Cell charge and cell integrity



*As described in the research of Dr. Jerry Tennant*

All cells operate with full life-force potential with a **negative charge at or above -50mV**. Entropy forces can cause the charge to fall towards a polarity change (eg.  $<0\text{mV}$ ), and this is the **point of ill-health and chronic disease**.

The heart has a negative charge between  $-70\text{mV}$  and  $-100\text{mV}$ , and this is why the **heart does not get cancer**.

# Structured water and DNA

- **Structured water around DNA:** Recent research has revealed that our DNA is enveloped by a layer of **structured water**. This water behaves uniquely in terms of both **structure** and **dynamics**
- **Light frequency sensitivity:** Water molecules in the hydration shell of the DNA double helix exhibit **oscillations**. These oscillations can be excited when exposed to **infrared (IR) light**. Interestingly, the **frequency** of the oscillation influences the strength of **hydrogen bonds**
- **In summary**, the structured water surrounding DNA is not only essential for its stability but also responds to specific vibratory frequencies and infrared energy. This interplay between structured water, ions, and DNA adds to the intricate *dance of life* at the molecular level.



# Cell regulation and healing is voltage



**It is the negative (-mV) voltage of your cells, and particularly your heart that sustain the life force energy of your body. Of course, it is the input of negative voltage (eg. electrons) from fresh food, structured water, sunlight, grounding with the earth, and contact with natures' frequencies, that contribute to this cell potential for regulation and healing.**

# You are not sick, you are dehydrated

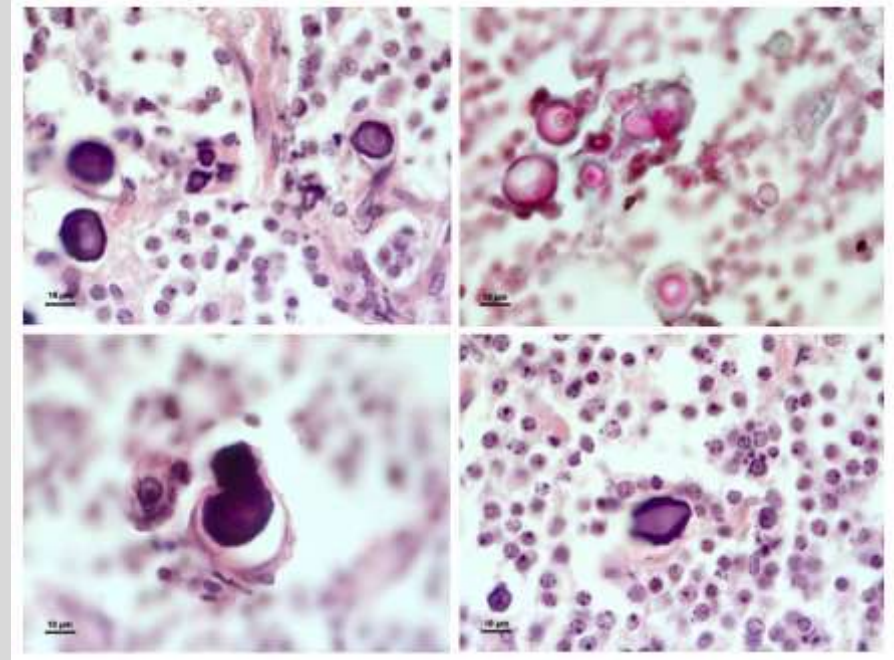
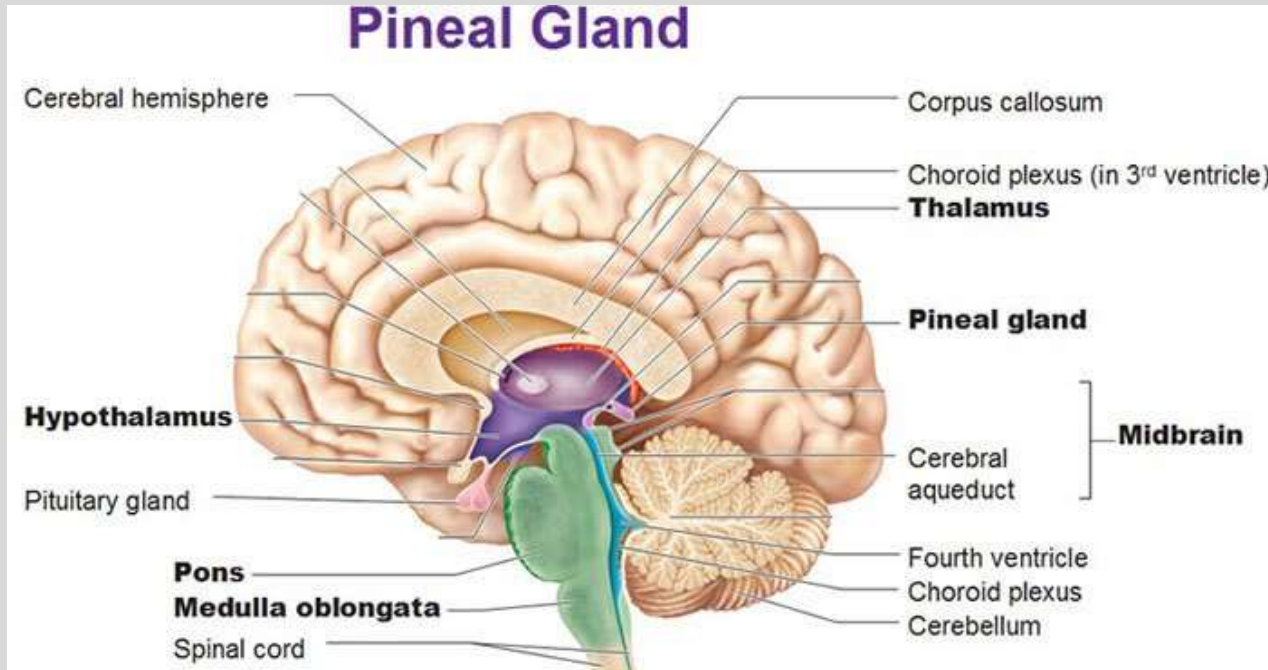


Health conditions linked to **dehydration** (including low salt and positive charge water) include **cell dysfunction and loss of negative charge (aging), high blood pressure, headaches and migraines, poor digestion and absorption, weight gain, cholesterol imbalances, autoimmune diseases, Alzheimer's, diabetes, cancer, depression, neck and back pain, cardiovascular issues, bulimia, hernias, acid imbalances, and depression.**

*From the research of F. Batmanghelidj MD (Dr. Batman)*



# Structured water removes calcite



*Images of calcification on the pineal gland*

Calcite can form within the inner walls of the cardiovascular system and other organs and systems, eg. the pineal gland. **Structured water converts calcite into aragonite (another crystalline form of calcium carbonate)**, and this is removed from the body through the blood to the kidneys/urine.

# Your body is the best filter for toxins

- Your body organs and systems are designed for disposal of toxins and structured water is the primary transport system to transform toxins and exclude them from cells through the elimination system. This energy process is free, and it does not have to be regularly replaced with a new filter/elimination system
- **Blood** transports waste substances to the organs that remove and process them for elimination. Blood flows into the kidneys through the renal arteries and out through the renal veins. The **kidneys** filter substances such as urea, uric acid, and creatinine out of the blood plasma and into the ureters. The **liver** also removes toxins from blood. During digestion, the liver cleans **blood** that has been enriched with vitamins before sending it back out to the rest of the body.
- Metabolic detoxification (detox), or biotransformation is a function that removes toxic substances from our body and can involve **microbe** polymorphism to transform/transmutate toxins.



# Loss of cell negative (-) charge increases aging



**Aging is a process of increased oxidation (loss of oxygen) that causes lower cell charge, and reduced cell memory.**

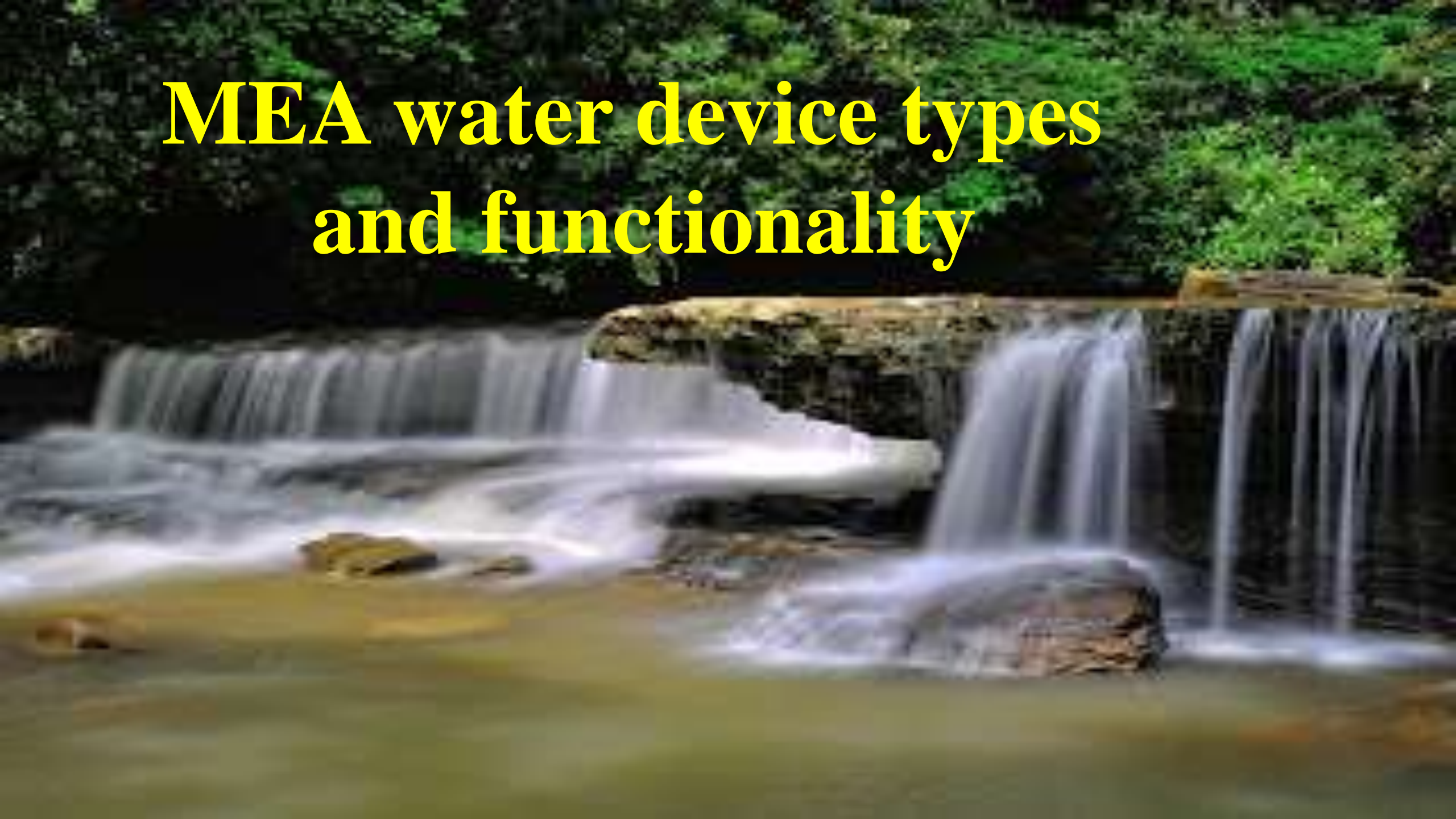
This is a very good reason to hydrate every day (before meals and 2 hours after each meal) with oxygen and hydrogen rich structured water.

# Benefits of structured water for cell health

- **Sustains cell charge (-mV)** in all living things (microbes, plants, animals and humans)
- **Maximises hydration** and minimises the effects of dehydration
- **Protects protein transport in blood from environmental disturbances** (eg. radiation, medications, etc.) and supports protein function
- **Protects DNA from outside influences** that can activate gene malfunction
- **Surrounds collagen to enable a wide range of biological functions** (eg. protection against disease), and therefore in summary:
  - Increases cell energy or vitality
  - Supports hydration
  - Slows down aging
  - Prevents disease.



# MEA water device types and functionality

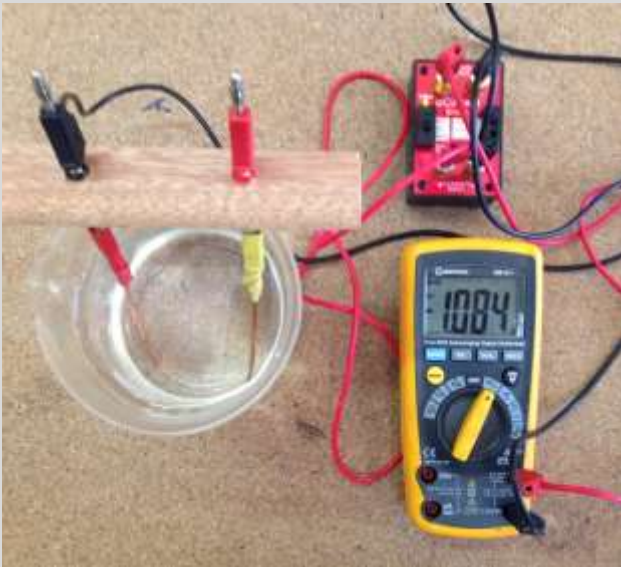




# Structured water has energy, charge and colour



Water sources have different voltage



Voltage has been amplified by x 10.



ELE Meter: Un-structured water is 11% life energy

ELE Meter: Structured water is 55% life energy or a 5-fold increase in life energy



Above: Bore water re-structured with a MEA device

Below: Magnesium bicarbonate bore water with a natural and permanent negative charge. *Sacred or Holy Water*



# Measuring device voltage



- Voltage in water is measured with a voltmeter and NOT an ORP meter (Oxidation Reduction Potential)
- The negative charge in the image on the left has been amplified by 10-fold with a UCurrent device. *The water source is from a groundwater bore on my property (spring quality water)*
- The saturation point for negative charge is about -1,500mV (or 1.5V) when **amplified (x10)** with a UCurrent device.
- The voltage of water is highly dependent on the water source, eg. whether it is water from a pristine (living) stream or from urban (dead) water.
- Albeit the negative charge in structured water can become more negative over time through the effects of light magnetism, to a maximum of -150mV (or 0.015V).



# Bottle top devices

**24 Carat Gold plated**



**Chrome plated**

# 1/2" inline water conditioner



**Chrome plated device for the shower, under sink, outside tap and water sprinkler**

# Inline devices (inside diameters)

1/2"



**Tiny home,  
camper**

3/4"



**Household**

1"



**Agriculture, light industrial**

1&1/4"



2"



4"

**Commercial**

*Note: Images are not to scale*



# Transmutes and neutralises pathogenic microbes in wastewater and tank water

*Structured, MEA water is the ultimate force of transmutation and transformation to create stable and coherent environments.*

- Test on creek water (14 Nov 2013) reduced E.coli (faecal coliforms: cfu/100ml) **from 250 to 2units**
- Test on piggery water (12 Mar 2014) reduced E.coli **from 2178 units to 1 unit.**

*Note: Australian laboratories will always record 1-2 units, even though 0 units were observed.*

# Uses for the portable bottle top device



Brings the crystalline structure back into **water**, **wine**, **fruit juices**, raw **milk**, etc.



Restores the aromatics to wine and prevents it from oxidising and turning to vinegar



# Decanter structured water and wine



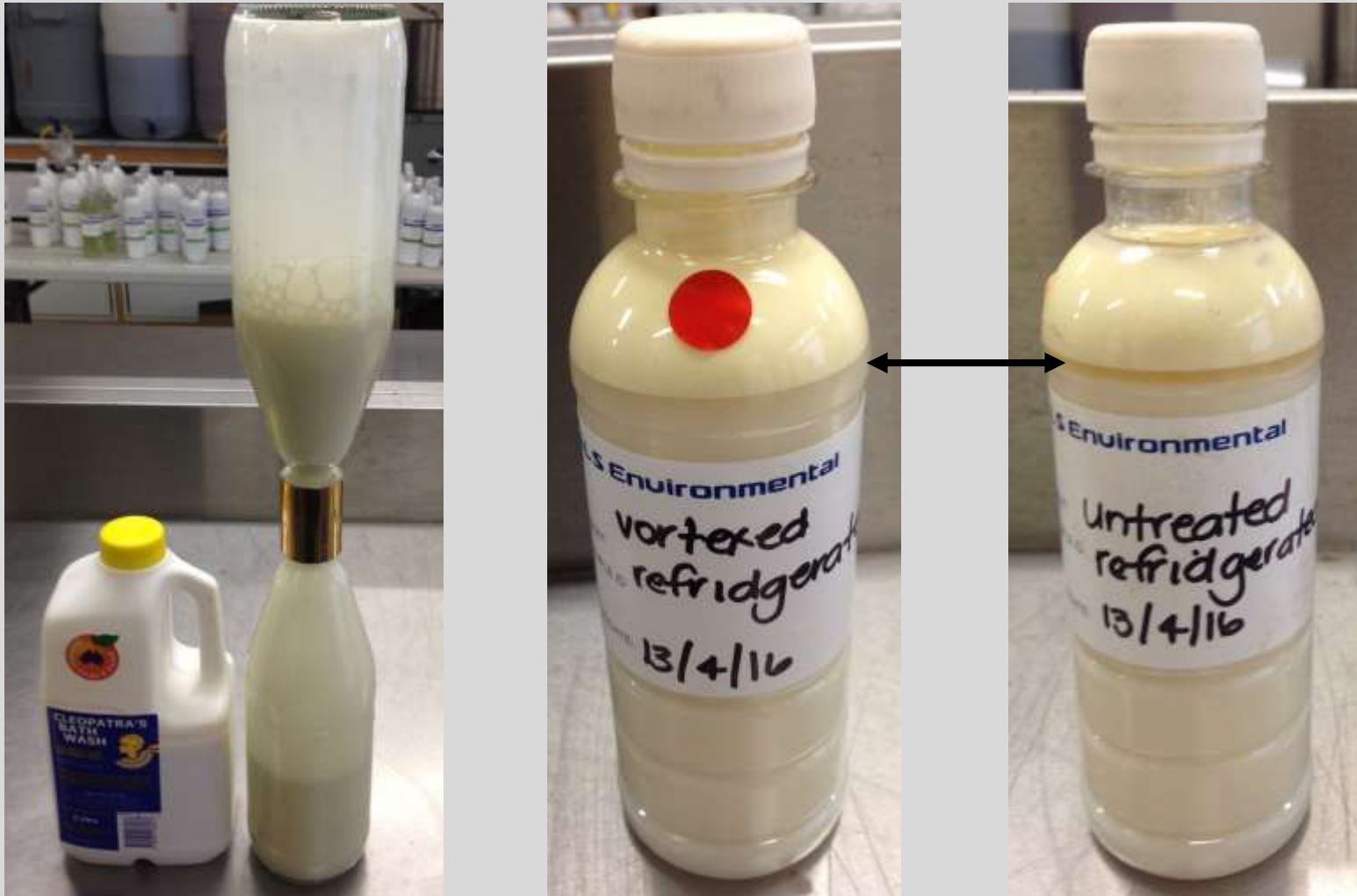
**Water is best decanted into a ceramic or glass amphora to outgas chemicals, eg. Chlorine.**



**Wine can be decanted into a carafe. Restructured wine will taste smoother with enhanced flavours, and never oxidise.**



# MEA treatment of milk



**Raw milk was treated with a MEA device (centre image) and compared with untreated raw milk (right image). The treated milk did not have a separation of the oils from the fats in the cream; and the treated milk had a shelf life 3 times longer than the untreated raw milk.**

# Cell life in MEA water does not oxidise



**2016 experiment  
2024 photos**

**When food is stored in MEA structured water, it does not oxidise or lose oxygen.**

Therefore, the food integrity is retained or sustained. The images above show the differences when blueberries (left pair) and Gogi berries (right pair) are stored in non-structured water (right bottles) and MEA structured water (left bottles). In the right bottles, the fruit has oxidised, and the polyphenol values have degraded, while in the MEA structured water the fruit nutritional values have been retained. **The results are significant for producing fruit juices, fermented and preserved foods, etc.**

**Spooky action in the moment**





# The release of frequency in structured water



This steel pot was used to produce magnesium oil from a seawater concentrate that passed through a MEA water device to produce a permanent negative charge in the seawater.

The pot was left to stand for 1 week and this metal splitting and unfolding occurred during this period, and it further unfolded over 2 months.

Three steel pots were destroyed using this technique, until we changed to copper pots.

Is this the potential energy of structured water?

Did a subtle, vortex frequency change the metal integrity of the steel pot? **This is spooky!**

# MEA devices entrain frequencies into water



The example on the left is compound of Molybdenum (Mo) orotate being entrained with a negative charge and 108 frequencies that are held permanently in the device. **This is spooky!**

A photograph of several cucumbers on a dark wooden cutting board. One cucumber is sliced into five rounds, which are arranged in a fan shape in the foreground. Another cucumber is sliced in half lengthwise to the right. A knife is partially visible on the right side of the board. The background is a plain, light gray surface.

# **Food vitality with MEA structured water**



# Cell energy after death

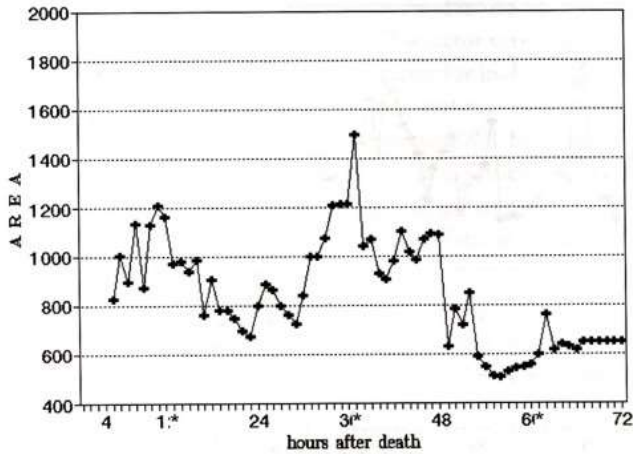


Fig. 2.5 Time dependence of Kirlian glow area of a finger for experiment N1. Vertical axis represents the area of the image; horizontal axis represents time in hours after death. Middle finger.

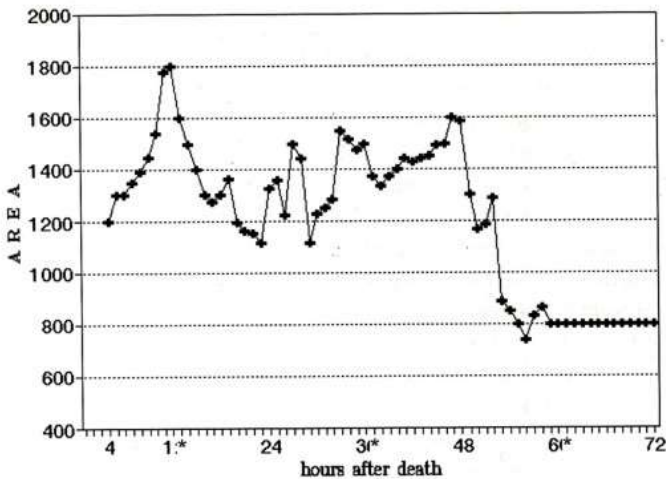


Fig. 2.6 Time dependence of Kirlian glow area of a finger for experiment N1. Vertical axis represents the area of the picture; horizontal axis represents time in hours after death. Ring finger.

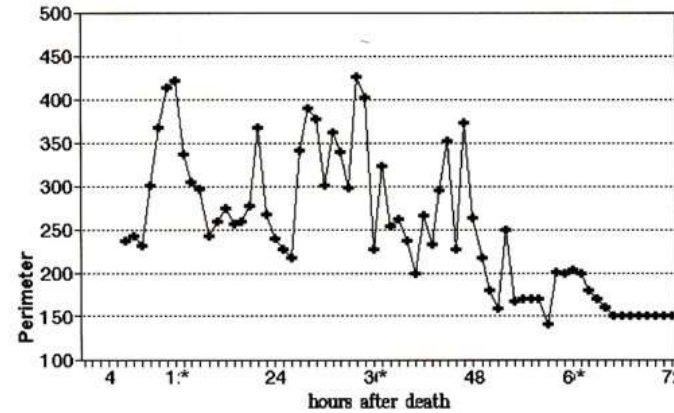


Fig. 2.8 Time dependence of Kirlian glow perimeter of a finger for experiment N1. Vertical axis represents the total perimeter of the image; horizontal axis represents time in hours after death. Fore finger.

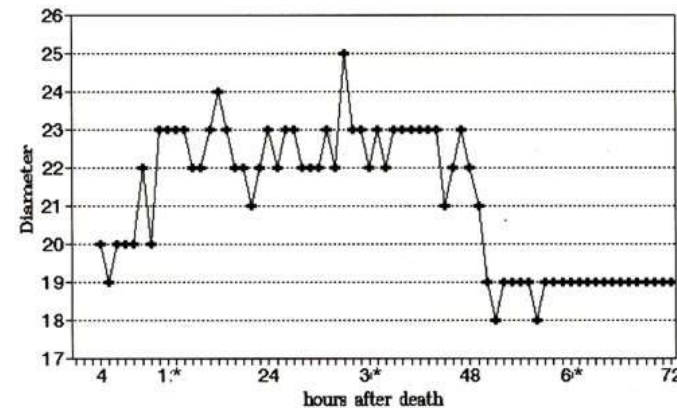


Fig. 2.9 Time dependence of Kirlian glow diameter of a finger for experiment N1. Vertical axis represents the maximum diameter along the main axis of a finger; horizontal axis represents time in hours after death. Fore finger.

The images on the left are from research work (1990's) undertaken by Dr. Konstantin Korotkov, who demonstrated that human cell memory (soul) takes about 60 hours to leave the body after death

I found the same applies to fruit and vegetables after they have been removed from their living system

The negative (-mV) charge of cells in fruit and vegetables becomes positive charge (+mV) about 48-60 hours after harvest (depending on plant vitality)

The life force energy of food can be restored to fruit, vegetables and meat when they are in contact with MEA structured (-mV) water.

**The negative charge from the MEA water is entrained to the food cells. Restoration of cell negative charge takes about 1-2 hours.**

# Restoring plant cell integrity



Plants can restore the integrity of cell water if placed in structured water, where it will **entrain a negative charge to its cells from the structured water.** It will stay this way for months or years while in the structured, MEA water.



# Table grapes grown with MEA water



These grapes were grown in 2013 after the application of MEA water. Prior to 2013, this vine normally produced about 20 grapes per bunch. This bunch had 375 grapes after 5 months of MEA water. The average per bunch size on the vine was about 250 grapes.



# Negative charge food

**2016 crop: 1.62 kg (3.56 lb)**



**Consistent juicy texture**



Nutrient density was consistently 2-3 times higher (*measured with BRIX and ELEM meters*) compared to the non-treated food.

# Turnip potential



This turnip weighed 2.56kg (5.63 lb) and was grown with negative charged water (2015). The photo was taken 2 months after the root was immersed in MEA ( $-mV$ ) water.



# Vegetables grown with MEA water and microbes



These vegetables have grown to 2-3 times normal size (*increased potential*) in a short timeframe when watered with MEA structured water. There is no insect attack (*see: no cabbage moth attack*), however they are nutrient dense and retained a sweet taste in a large form.



# Client examples using MEA structured water and added microbes 2022



Vegetables grown in structured water are generally larger with more intense flavour and increased storage capacity.

# Microbes in structured water (treated v. untreated)



The left image is a barley root system that has been treated with a microbial formulation in MEA structured water. This plant has significantly retained more soil carbon and moisture (*and doubled grain yield*), also BRIX values more than doubled from 5 to 11.5. This is compared with the right image that is barley grown in the adjoining paddock using conventional fertiliser, by a different farmer.



# MEA structured water with added biology



**Treated with  
MEA water  
and Phi'on  
biology**

**Untreated**



**A market food production  
experiment near Handan,  
China using the MEA water  
device, and venturi to  
deliver Phi'on soil biology  
(Catalyst) as line drip onto  
chilli plants.**

**The increase in bulk weight  
of the total plant production  
was 5-fold compared with  
the control plot of untreated  
plants.**





# MEA water trial with medicinal cannabis plants in Oregon USA



**Medicinal cannabis plants were grown with and without MEA water to test for differences in growth rates and other variations.**

**The MEA watered plants had:**

- **100% seed germination compared to 60% of the control**
- **Taller growth with significantly increased foliage and root system**
- **Fatter stem bases due to increased uptake of silica that protects the plant from insect attack and provides greater stability for plant growth.**

A high-speed photograph of water being poured into a clear glass. The water is captured mid-pour, creating a dynamic splash inside the glass. The glass sits on a dark, reflective surface that is covered with numerous water droplets and a larger puddle, suggesting a recent spill or a wet environment. The background is a soft, out-of-focus blue gradient.

**Conclusion**

# MEA structured water benefits

- Structured water is the life-force (-mV) energy that enables cell life (microbes, plants, animals and humans), to enhance cell energy, reduce aging effects and disease
- Entrain and holds a permanent negative charge and hold beneficial frequencies (essentially any frequency that can be reduced to 3, 6 or 9, eg. 528Hz)
- Neutralises chemicals and reverts them to an elemental form, and transmutes/morphs pathogenic microbes, eg. E.coli (*polymorphism*)
- Increases microbe and plant potential for nutrient uptake by 2 to 4-fold
- Wine structured with a MEA device will not oxidise and turn to vinegar
- Cows drinking structured water will produce an extra litre of milk per day. Similar % results were achieved for goats.
- Chilli production (China) increased by 5-fold, and cannabis production (Oregon, USA) doubled production and increased seed germination to nearly 100%.



# Structured (-mV) water applications in society

- Negative charge water moves easily within the cellular matrix of the body, helping with nutrient absorption
- Penetrates cells easily to support hydration
- Helps to remove toxic waste from the walls of blood vessels and fat cells
- The use of structured water in wellbeing, food security and waste-water management will allow us to explore new levels of health, wellbeing and disease prevention, eg. structured for homeopathic formulations
- Industrial applications could include the extraction of methane and hydrogen from sewage/septic wastewater, increasing fuel efficiency, reducing carbon emissions on vehicles, excluding matter from wastewater, repurposing wastewater, etc.
- In time, the use of potential energy from structured water will enable energy to be initially produced for domestic, transport and light industrial purposes, at a very low cost.

# Philosophy in science

The science of water energy and structure has had a rocky pathway over the past 100 years. Many leading scientists in this important field of research have been ridiculed, including the idea that water has memory/consciousness or intelligence. No university in Australia teaches the science of water structure, and most Australian Professors of water science consider *structured water to be pseudoscience*.  
*Every now and then, science needs a dose of philosophy.*



“Expect poison from  
the standing water.”

William Blake, *the Marriage  
of Heaven and Hell*



“Never confuse  
education with  
intelligence, you can  
have a PhD and still  
be an idiot.”

Richard P. Feynman, *Nobel Laureate  
in Physics*

# Discussion points

- While there is over **100 years of water energy and water structure research**, the understanding in academia of water energy capacities and opportunities for cell health, is either poor or misrepresented
- Academics and public **research agencies are using de-structured (dead) water in their experiments** and therefore they observe (and believe) vastly different capacities of water, based only on chemistry
- Cell dysfunction can occur with the continuous use of de-structured water, eg. urban water. Consequently, researches observe in urban water a **type of unstable molecule that contains oxygen and that easily reacts with other molecules**. This is a build up of reactive oxygen species in cells that may cause damage to DNA, RNA, and proteins, and cell death. Reactive oxygen species are free radicals
- However, with the continuous use of **structured water** this reactive environment is rarely experienced, mainly due the cell environment (coherence) being more **stable and less reactive**. Clearly, diet, lifestyle and environmental factors also influence the wellbeing outcomes.



# A way forward for water energy science

*There is a need to produce the more evidence in the use of structured water to challenge the myths of the water and chemical industries, and better inform people about the benefits of structured, negative charge (-) water in society.*

- The water treatment industry assumes that water chemistry is the only measure of water quality. Water energy science is not part of their equation.
- This *belief system* about water chemistry gives rise to false assumptions and marketing around filters (*reservoirs of sludge and toxic energy*), alkaline water to alkalise cells (*all water and food entering the stomach becomes acidic*), deuterium ( $2\text{H}$  isotope) depletion water (*hydrogen in groundwaters is part of cell function, so why deplete it*), Hydrogen water (*water is already  $\text{H}_2\text{O}$ , and structured water is abundant in  $\text{H}$  and  $\text{O}$* ), Frequency water (*all water structures entrain frequency but this alone does not produce structured water*), Reverse Osmosis, distilled and desalinated water (*all of these waters have high positive (+) charge, and lack the minerals and energy that water strives to sustain*)
- These positive charge (+) technologies fail to produce a permanent negative charge in water, and therefore they contribute to cell dysfunction.

# Water's messages from nature

- Schauberger's most famous quotes – *Comprehend and copy nature is the only way we can reclaim the earth and restore balance. Because water is the giver of life, it needs to be handled correctly, in accordance with nature, to thrive. Otherwise, all organisms that rely on water for life will perish.*
- *For the benefit of all living beings, we need to live in harmony with nature. Effectively unlearning many of the habits that we have learned from modern society, so that life on planet earth can be harmonious and in balance with nature.*

## **Contacts details for papers, products and services.**

**Robert Gourlay**

**PO Box 132 Braidwood NSW 2622 Australia**

**(61 2) 48428182, 61-418 462 443**

**[rob@meawater.com](mailto:rob@meawater.com)**

**[www.meawater.com](http://www.meawater.com)** (MEA devices)

**[www.phion.com.au](http://www.phion.com.au)** (Environmental & wellbeing products)

**[www.primalwater.com.au](http://www.primalwater.com.au)** (Groundwater bore mapping and location)

**[www.eric.com.au](http://www.eric.com.au)** (Resource mapping and assessment)





**Thank you**